



**Staines Road
Twickenham**

£749,950

ChaseBuchanan

Key Features

- Viewings accompanied by Chase Buchanan
- Spacious family home
- Chain free
- Scope to extend and improve
- Four bedrooms
- Large rear garden
- Off street parking
- Close to David Lloyd golf course
- Excellent schools nearby
- Council Tax Band F

Description

This substantial semi-detached home with well-proportioned rooms and a large garden has further scope to extend and is available chain free.

With an internal space of nearly 1,700 sq ft, the ground floor accommodation includes a spacious family room, dining room, reception room, kitchen and W.C.

The first floor provides three double bedrooms, a separate WC and a bathroom with a further spacious bedroom on the top floor. With planning permission applied for further extension.

The large rear garden has lots of potential and to the front is off street parking for two cars.

Located very close to David Lloyd health club, spa and golf course and the open spaces of Crane Park and the River Crane are easily accessible. There is an excellent choice of primary and secondary schools in the area including Waldegrave School, Crane Park Primary and Twickenham School. There are frequent bus links to and from Twickenham and Richmond town centres, as well as Heathrow Airport. For commuters the A316/M3/M25 provides easy access into central London and the coast.

To arrange an appointment to view, please call the vendors' Sole agents Chase Buchanan.





Staines Road TW2

Approximate Gross Internal Floor Area = 155.3 sq m / 1672 sq ft

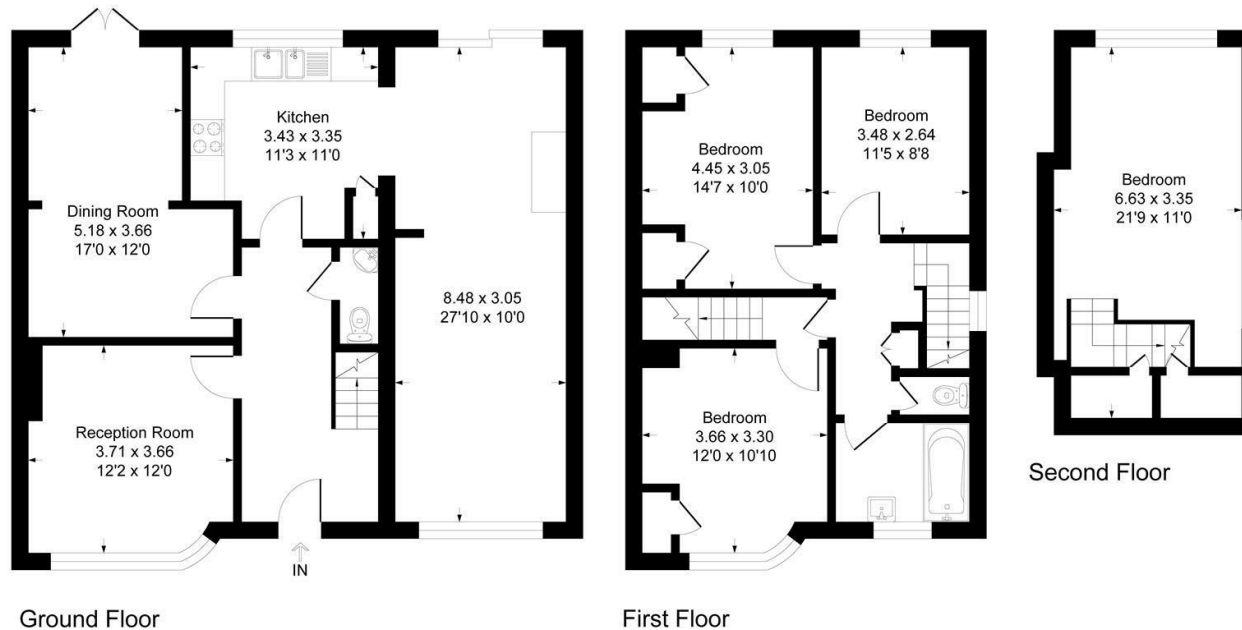


Illustration for identification purposes only, measurements are approximate, not to scale.

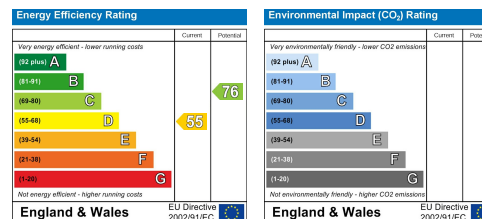
For more information or to book a viewing, please contact:

020 8744 0101

twickenham@chasebuchanan.london

4 York Street, TW1 3LD

Care has been taken in the preparation of these particulars, however, their accuracy is not guaranteed and they do not form part of any contract. Measurements stated must be considered maximum.



ChaseBuchanan